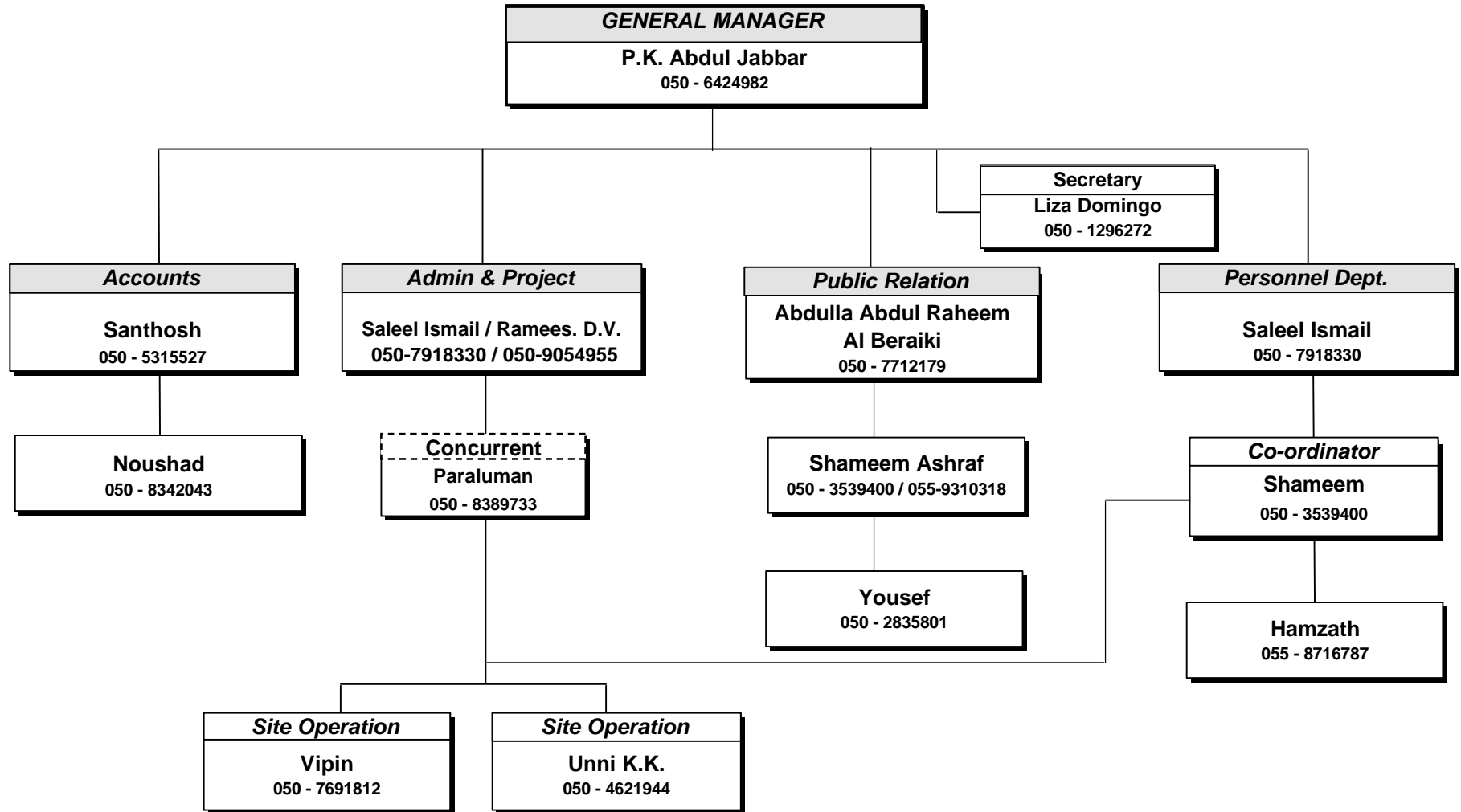




# ATLANTIC OIL SERVICES

## EMERGENCY COMMUNICATION NETWORK CHART



**REMARKS:**

IN CASE OF ABSENCE OF G.M., ADMIN AND PROJECT WILL BE IN CHARGE.

IN CASE OF ABSENCE OF HEAD OF ADMIN AND PROJECT, PERSONNEL WILL BE IN CHARGE.

IN CASE OF ABSENCE OF ADM & PROJECT, PERSONNEL, PUBLIC RELATIONS WILL BE IN CHARGE.

IN CASE OF ABSENCE OF ANY EMPLOYEE, THE NEXT EMPLOYEE IN SAME SECTION WILL BE IN CHARGE.